

# Materials UB Parallel system incl. art.no. - 2 x Ø100



**WALL DUCT SET (PP)**

Description	Art. No.
2 x Ø100	0310731

Incl. wall duct, 2 bends (90°) and 2 tubes



**WALL DUCT (PP)**

Description	Art. No.
2 x Ø100	0310729



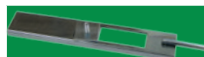
**SEALANT (EPDM)**

Description	Art. No.
Ø100	0310715



**BENDS (PP)**

Description	Art. No.
Ø100 90°	0310705
Ø100 45°	0310704
Ø100 90° with support	0310706



**SUPPORT STRIP FOR BEND WITH SUPPORT**

Description	Art. No.
	0310690



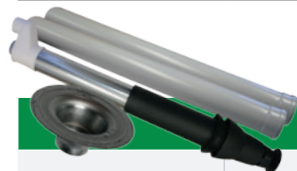
**ROOF DUCT + AIR VENTILATION**

Description	Art. No.
Ø100	0310711



**ROOF DUCT (PP)**

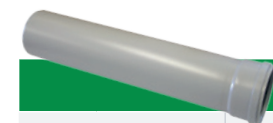
Description	Art. No.
2 x Ø100	0310709



**ROOF DUCT SET (PP)**

Description	Art. No.
2 x Ø100	0310713

Incl. roof duct, 2 tubes (1m) and roof connection plate



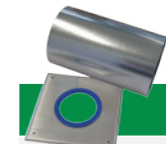
**TUBE (PP)**

Description	Art. No.
Ø100 250 mm	0310723
Ø100 500 mm	0310724
Ø100 1000 mm	0310725
Ø100 2000 mm	0310726
Ø100 Telescopic	0310727



**T-TUBE + END CAP (PP)**

Description	Art. No.
Ø100	0310717



**WALL PLATE**

Description	Art. No.
Ø100	0310733

# Materials UB Concentric system incl. art.no. - Ø 100 / 150



## WALL DUCT SET

Description	Art. No.
Ø100/150	0310760

Incl. wall duct, bend (90°) and wall flange



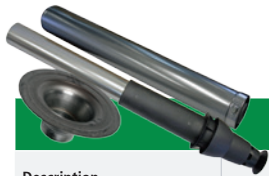
## ROOF DUCT

Description	Art. No.
Ø100/150	0310754



## WALL DUCT

Description	Art. No.
Ø100/150	0310758



## ROOF DUCT SET

Description	Art. No.
Ø100/150	0310756

Incl. roof duct, tube (1m) and roof connection plate



## SEALANT (EPDM)

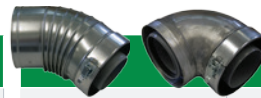
Description	Art. No.
Ø100/150	0310715



## CONCENTRIC TUBE

Description	Art. No.
Ø100/150 250 mm	0310746**
Ø100/150 500 mm	0310747*
Ø100/150 1000 mm	0310748**
Ø100/150 2000 mm	0310749**
Ø100/150 500 mm to cut	0310751*
Ø100/150 Telescopic	0310750

\*To cut \*\*Fixed



## CONCENTRIC BENDS

Description	Art. No.
Ø100/150 45°	0310736
Ø100/150 90°	0310737



## T-TUBE + END CAP

Description	Art. No.
Ø100/150	0310739



## WALL DUCT PLATE

Description	Art. No.
Ø100/150	0310762

# Materials UB Cascade incl. art.no. Ø150



## CASCADE TUBE (PP)

Description		Art. No.
Ø150	Line	0310671
Ø150	Back to back	0310670



## CONDENSATION KIT + VALVE (PP)

Description		Art. No.
Ø150		0310674



## TUBE (PP)

Description		Art. No.
Ø150	500 mm	0310693
Ø150	1000 mm	0310694
Ø150	2000 mm	0310695



## BENDS (PP)

Description		Art. No.
Ø150	90°	0310665
Ø150	45°	0310664



## ADAPTER (PP)

Description		Art. No.
Ø150	to Ø200	0310678



## CONDENSATE DRAIN TUBE (PP)

Description		Art. No.
Ø150		0310676



## T-PIECE + VALVE (PP)

Description		Art. No.
Ø150		0310691



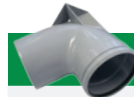
## SEALANT (EPDM)

Description		Art. No.
Ø150		0310688



## WALL PLATE

Description		Art. No.
Ø150		0310699



## BEND WITH SUPPORT (PP)

Description		Art. No.
Ø150	90°	0310666



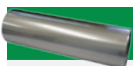
## SUPPORT FOR BEND WITH SUPPORT

Description		Art. No.
Ø150		0310690



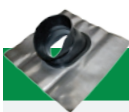
## ROOF DUCT + AIR VENTILATION

Description		Art. No.
Ø150		0310682



## EXTENSION ROOF DUCT

Description		Art. No.
Ø150	500 mm	0310679



## LEAD ROOF PLATE

Description		Art. No.
100-150		0306017



## ROOF DUCT (PP)

Description		Art. No.
Ø150		0310681

# Materials UB Cascade incl. art.no. Ø150



**T-TUBE - CONCENTRIC**

Description	BFM 30	BFM 50	BFM 80	BFM 100	BFM 120
Ø 80 / 125	0307487	-	-	-	-
Ø 100 / 150	-	0305244	-	-	-
Ø 130 / 200	-	-	0307488	-	-



**ADAPTER - CONC. TO PAR.**

Description		BFM 30	BFM 50	BFM 80	BFM 100	BFM 120
from	to					
Ø 130 / 200	1 x Ø 225	-	-	-	0306801	0306801



**CLAMP - TUBE WITH TUBE**

Description	BFM 30	BFM 50	BFM 80	BFM 100	BFM 120
Ø 125	0302517	-	-	-	-
Ø 150	-	0302506	-	-	-
Ø 200	-	-	0302305	0302305	0302305



**EXPENSION TUBE**

Description	BFM 30	BFM 50	BFM 80
Ø 80 / 125	0303853	-	-
Ø 100 / 150	-	0303854	-
Ø 130 / 200	-	-	0303855



**EXPENSION TUBE - CONC. TO CONC.**

Description		BFM 30	BFM 50	BFM 80	BFM 100	BFM 120
from	to					
Ø 80 / 125	Ø 100 / 150	0305009	-	-	-	-
Ø 100 / 150	Ø 130 / 200	-	0306188	-	-	-

# Materials UB Cascade incl. art.no. Ø200



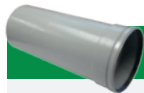
## CASCADe TUBE (PP)

Description		Art. No.
Ø200	Line	0310672
Ø200	Back to back	0310673



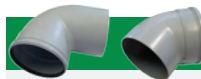
## CONDENSATION KIT+ VALVE (PP)

Description	Art. No.
Ø200	0310675



## TUBE (PP)

Description		Art. No.
Ø200	500 mm	0310696
Ø200	1000 mm	0310697
Ø200	1900 mm	0310698



## BENDS (PP)

Description		Art. No.
Ø200	90°	0310668
Ø200	45°	0310667



## CONDENSATE DRAIN PIPE (PP)

Description	Art. No.
Ø200	0310677



## T-PIECE + VALVE (PP)

Description	Art. No.
Ø200	0310692



## SEALANT (EPDM)

Description	Art. No.
Ø200	0310689



## WALL PLATE

Description	Art. No.
Ø200	0310700



## BEND WITH SUPPORT

Description		Art. No.
Ø200	90°	0310669



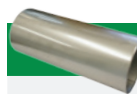
## SUPPORT FOR BEND WITH SUPPORT

Description	Art. No.
Ø200	0310690



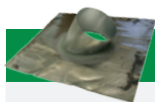
## ROOF DUCT + AIR VENTILATION

Description	Art. No.
Ø200	0310684



## EXTENSION ROOF DUCT (RVS)

Description		Art. No.
Ø200	500 mm	0310680



## ANGLED ROOF PLATE

Description		Art. No.
Ø230	38-62°	0310686

## ROOF PLATE

Description	Art. No.
Ø200	0308249



## ROOF DUCT (PP)

Description	Art. No.
Ø200	0310683

# Flue gas discharge configurations UB cascade

The UB boilers can be installed in 'open' or 'closed' configuration. The flue gas discharge categories for UB are; B23, B33, C13, C33, C43, C53, C63, C83 and C93. Three types of flue gas discharge configurations can be applied to the UB boiler:

- Individual flue gas outlet
- Collective flue gas outlet under-pressure
- Collective flue gas outlet over-pressure

	UB 70	UB 110	UB 140
<b>Concentric</b>			
Diameter (mm)	100/150	100/150	100/150
Max. length (m)	25	15	8
87° bend resistance length	-2.6	-2.6	-2.6
45° bend resistance length	-1.1	-1.1	-1.1
<b>Parallel</b>			
Diameter (mm)	100	100	100
Max. length (m)	63	35	12
87° bend resistance length	-1.8	-1.8	-1.8
45° bend resistance length	-0.9	-0.9	-0.9