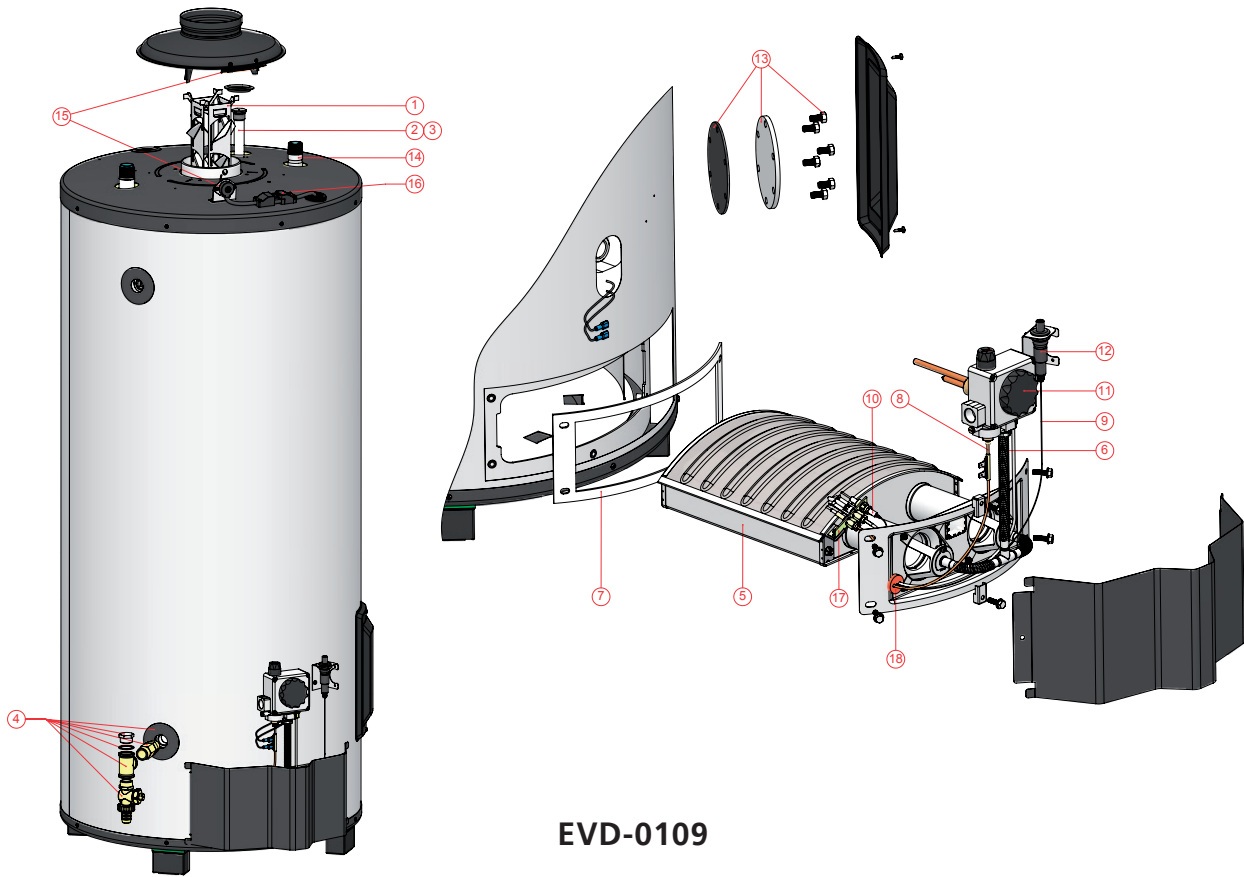


Exploded view BTL



EVD-0109

BTL

BTL parts



no	description		date	BTL 85	BTL 100
1	Flue Baffle			0196172001(S)	0313200(S)
2	Anode			0183463039(S)	0183463050(S)
3	Flexible anode			0304728(S)	0304728(S)
4	Drain valve kit			0301022(S)	0301022(S)
5	Burner			0313202(S)	0313203(S)
6	Burner tube			0313201(S)	0313201(S)
7	Ceramic fiber paper			0313204(S)	0313204(S)
8	Thermocouple			0071872(S)	0071872(S)
9	Cable of piezo ignitor			0313246(S)	0313246(S)
10	Electrode ignition			0071608(S)	0071608(S)
11	Gas Control	NAT		0300949(S)	0300949(S)
		LP		0301914(S)	0301914(S)
12	Piezo igniter			0307596(S)	0307596(S)
13	Clean out service kit			0305082(S)	0305082(S)
14	Tube inlet			0313205(S)	0313206(S)
15	Thermostat roll out assy			0308237(S)	0308237(S)
16	Cable connection TRS			0305346(S)	0305346(S)
17	Compl. pilot burner assy	NAT		0313230(S)	0313230(S)
		LP		0313231(S)	0313231(S)
18	Grommet			0313363(S)	0313363(S)

BTL accessories

description	date	BTL 85	BTL 100
Conversion set to LP-gas		0313172(S)	0313174(S)
Conversion set to NAT-gas		0313173(S)	0313175(S)
Inlet security group 3/4" sfr		0302706(S)	0302706(S)
T&P valve 3/4" NO WRAS		0076527004(S)	0076527004(S)
Inlet security group DN32		-	0309926(S)
Gas cock		0300718(S)	0300718(S)