

## Additional flue gas discharge material TWI II Concentric - Ø80 / 125



**ROOF DUCT**

Description	Art. No.	
	Alu	PP
Ø80/125	0311457	0310753



**WALL DUCT**

Description	Art. No.	
	Alu	PP
Ø80/125	0302516	0310757



**ROOF DUCT SET**

Description	Art. No.	
	Alu	PP
Ø80/125	0305042	0310755

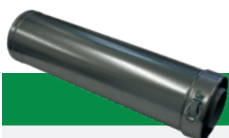
○ Incl. flange and concentric tube (1m)



**WALL DUCT SET**

Description	Art. No.	
	Alu	PP
Ø80/125	0302515	0310759

○ Incl. concentric tube (0.5m), bend (90°) and wall flanges



**CONCENTRIC TUBE**

Description		Art. No.	
		Alu	PP
Ø80/125	250 mm	-	0310740
Ø80/125	500 mm	0302510*	-
Ø80/125	1000 mm	0311448*	0310742
Ø80/125	1500 mm	0311449*	-
Ø80/125	2000 mm	-	0310743
Ø80/125	Telescopic (280-395 mm)	-	0310744
Ø80/125	500 mm	-	0310745*

\* cuttable



**BENDS**

Description		Art. No.	
		Alu	PP
Ø80/125	90°	0313776	0310735
Ø80/125	45°	0302514	0310734



**T-TUBE + END CAP (PP)**

Description	Art. No.	
	Alu	PP
Ø80/125	0307487	0310738



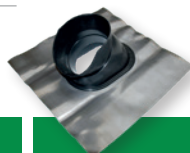
**WALL DUCT PLATE (PP)**

Description	Art. No.
Ø125/150	0310761



**FLANGE - CONC. ROOF TERMINAL**

Description		Art. No.
Terminal	Flange	
Ø80/125	Ø140	0302520



**ROOF TILE FOR CONC. ROOF TERMINAL**

Description		Art. No.
Ø80/125	Angle 25°-45°	0303506



**AIR INLET BASKET**

Description	Art. No.
Ø80/125	0305030

# Additional flue gas discharge material TWI II Parallel - 2 x Ø80



## ROOF DUCT

Description	Art. No.
	2 x Ø80



## WALL DUCT SET (PP)

Description	Art. No.
2 x Ø80	0310730

Incl. wall duct, 2 bends (90°) and 2 tubes



## ROOF DUCT SET (PP)

Description	Art. No.
2 x Ø80	0310712

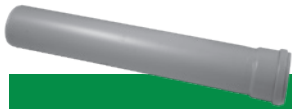
Incl. roof duct, 2 tubes (1m) and roof connection plate



## ROOF DUCT

Description	Art. No.
Ø 80	0305041

○ Incl. mounting bracket and adapter



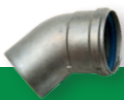
## TUBE

Description	Art. No.	
	Alu	PP
Ø80 250 mm	-	0310718
Ø80 500 mm	0307179	0310719
Ø80 1000 mm	0307180	0310720
Ø80 1500 mm	0307181	-
Ø80 2000 mm	-	0310721
Ø80 Telescopic	-	0310722



## BENDS (PP)

Description	Art. No.
Ø80 45°	0310701
Ø80 90°	0310702
Ø80 90° with support	0310703



## BENDS (ALU)

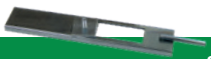


Description	Art. No.
Ø 80 Angle 45°	0307182
Ø 80 Angle 87 / 90°	0307183



## ADAPTER - CONC. TO PAR. (ALU)

Description	Art. No.
From To	
Ø 80 / 125 2 x Ø 80	0312209



## SUPPORT STRIP FOR BEND WITH SUPPORT

Description	Art. No.
Ø80	0310690



## WALL DUCT

Description	Art. No.	
	Alu	PP
2 x Ø80	0305016	0310728