

SGE before 22-10-'09

SGE parts



| nr | description | date | 40 | 60 |
|----|---|------|---------------------------------------|---------------------------------------|
| 1 | Burner NAT gas Burner LP | | 0304085(S) 0304086(S) | 0308889(S) 0308906(S) |
| 2 | Hot surface igniter | | 0304079(S) | 0304079(S) |
| 3 | Flame probe | | 0192478(S) | 0192478(S) |
| 4 | Gas control | | 0300808(S) | 0300808(S) |
| 5 | Differential air pressure switch | | 0309054(S) | 0308872(S) |
| 8 | Air supply hose | | 0304035(S) | 0304035(S) |
| 9 | Clamping strip Ø 130 mm | | 0305027(S) | 0305027(S) |
| 10 | Anode Flexible anode | | 0183463039(S) (4x) 0304728(S) (4x) | 0183463039(S) (4x) 0304728(S) (4x) |
| 11 | Appliance control service kit | | 0308882(S) | 0308882(S) |
| 12 | Transition piece damper | | 0304987(S) | 0304987(S) |
| 13 | Temperature sensor T2 (top tank) | | 0304469(S) | 0304469(S) |
| 14 | Gasket burner/tank | | 0192331(S) | 0192331(S) |
| 15 | Hot water outlet nipple | | 0304017(S) | 0304017(S) |
| 16 | Temperature sensor T1 (bottom tank) | | 0308149(S) | 0308149(S) |
| 17 | Cover plate cleaning opening | | 0039137002/24(S) | 0039137002/24(S) |
| 18 | Cleaning opening set | | 0305082(S) | 0305082(S) |
| 19 | Cold water inlet nipple | | 0070615(S) | 0070615(S) |
| 20 | Drain valve | | 0308997(S) | 0308997(S) |
| 21 | Bend | | 0304986(S) | 0304986(S) |
| 22 | Adapting socket | | 0192636(S) | 0192636(S) |
| 23 | Siphon | | 0307725(S) | 0307725(S) |
| 24 | Fan kit | | 0304104(S) | 0304104(S) |
| 25 | Flue gas sensor | | 0304301(S) | 0304301(S) |
| 26 | Solar system control service kit | | 0308874(S) | 0308874(S) |
| 27 | Temperature sensor S1 (in solar collector) | | 0308904(S) | 0308904(S) |
| 28 | Temperature sensor S2 (in solar heat exchanger) | | 0308149(S) | 0308149(S) |
| 29 | T&P Valve (1"/150 PSI) | | 0099383005(S) | 0099383005(S) |
| | Service Kit Q/T Sensor | | 0313621(S) | 0313621(S) |

SGE accessories

| description | date | 40 | 60 |
|------------------------------------|------------------|---------------|---------------|
| Gas cock ¾" kit | | 0300719(S) | 0300719(S) |
| Protected cold supply setup G1" | | 0070066003(S) | 0070066003(S) |
| Reducing Nipple Rp1½"x 22 mm press | | 0309411(S) | 0309411(S) |
| Reducing Nipple Rp1½"x 28 mm press | | 0309412(S) | 0309412(S) |
| Reducing Nipple Rp1½"x 35 mm press | | 0309413(S) | 0309413(S) |
| Dummy (sensor solarkit) | | 0309152(S) | 0309152(S) |
| Isolating transformer | | 0306054(S) | 0306054(S) |
| T&P valve NO WRAS | | 0099383005(S) | 0099383005(S) |
| Power anode kit | before 01-09-'09 | 0309217(S) | 0309217(S) |

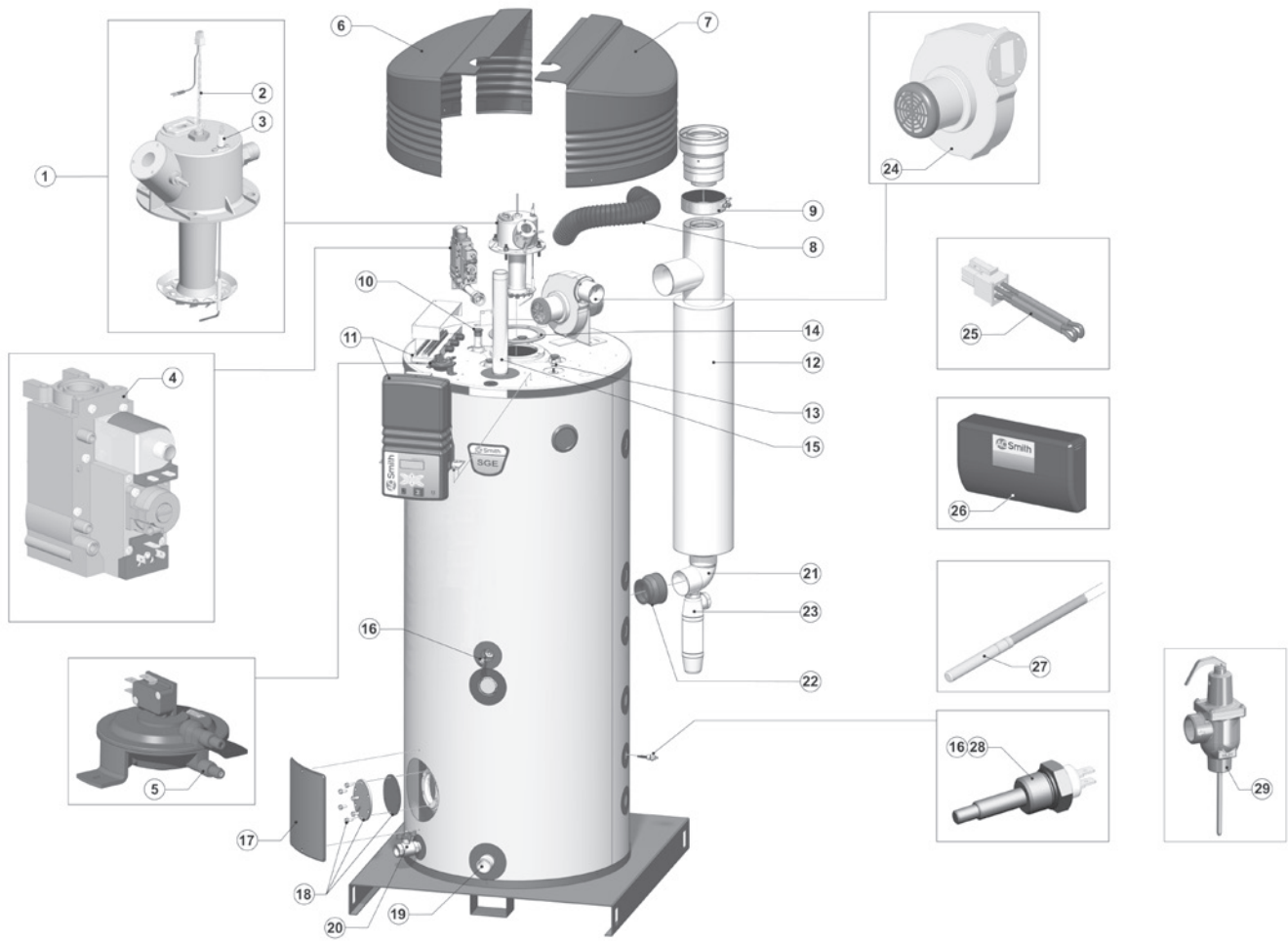
Parts that are marked yellow are parts that are used for maintenance.

Please check the serial number to determine the production date:

172406210302002

year week

Exploded view SGE before 22-10-'09



EVD-0045

SGE after 22-10-'09

SGE parts



| Nr | description | date | 40 | 60 |
|----|---|------------------|---------------|---------------|
| 1 | Control | before 28-07-'13 | 0309362(S) | 0309362(S) |
| | | after 29-07-'13 | 0311159(S) | 0311159(S) |
| 2 | Gas control (nat) | before 03-02-'13 | 0310186(S) | 0310186(S) |
| | | after 04-02-'13 | 0310155(S) | 0310155(S) |
| | Gas control (Lp) | before 03-02-'13 | 0310188(S) | 0310188(S) |
| | | after 04-02-'13 | 0310157(S) | 0310157(S) |
| 3 | Burner | | 0309297(S) | 0309297(S) |
| 4 | Power Anode | | 0197709(S) | 0197709(S) |
| 5 | Power Anode | | 0197710(S) | 0197710(S) |
| 6 | Fan | | 0309159(S) | 0309159(S) |
| 7 | Glow igniter | | 0309232(S) | 0309232(S) |
| 8 | Flame probe | | 0310075(S) | 0310075(S) |
| 9 | Potentiostat | | 0306160(S) | 0306160(S) |
| 10 | Temperature Sensor (top of tank) | | 0311295(S) | 0311295(S) |
| 11 | Temperature Sensor (bottom of tank) | | 0308149(S) | 0308149(S) |
| 12 | Differential air pressure switch | | 0309169(S) | 0309169(S) |
| 13 | Harness | | 0309136(S) | 0309136(S) |
| 14 | Gaskets | | 0309608(S) | 0309608(S) |
| 15 | Air inlet | | 0309148(S) | 0309148(S) |
| 16 | Cleaning opening | | 0305082(S) | 0305082(S) |
| 17 | Drain valve | | 0026273004(S) | 0026273004(S) |
| 18 | Plastic adapting socket (exit heat exchanger) | | 0192636(S) | 0192636(S) |
| 19 | Solar system control | before 28-07-'13 | 0308874(S) | 0308874(S) |
| | | after 29-07-'13 | 0311055(S) | 0311055(S) |
| 20 | Temperature Sensor (collector) | | 0308904(S) | 0308904(S) |
| 21 | Temperature Sensor (small heat exchanger) | | 0308149(S) | 0308149(S) |
| 22 | T&P Valve (1"/150 PSI) | | 0099383005(S) | 0099383005(S) |
| 23 | Reducing valve | after 04-02-'13 | 0310180(S) | 0310180(S) |
| 24 | Cover Potentiostat | after 04-05-'15 | 0311486(S) | 0311486(S) |
| | | | 0313621(S) | 0313621(S) |
| | Service Kit Q/T Sensor | | 0313621(S) | 0313621(S) |

SGE accessories

| description | date | 40 | 60 |
|------------------------------------|------|---------------|---------------|
| Gas Cock | | 0300719(S) | 0300719(S) |
| Inlet security group G1 | | 0070066003(S) | 0070066003(S) |
| Inlet security set DN40 | | 0309927(S) | 0309927(S) |
| Reducing Nipple (for T&P) | | 0306713(S) | 0306713(S) |
| Reducing Nipple Rp1½"x 22 mm press | | 0309411(S) | 0309411(S) |
| Reducing Nipple Rp1½"x 28 mm press | | 0309412(S) | 0309412(S) |
| Reducing Nipple Rp1½"x 35 mm press | | 0309413(S) | 0309413(S) |
| Combined flow & temperature sensor | | 0309285(S) | 0309285(S) |
| Dummy (sensor solarkit) | | 0309152(S) | 0309152(S) |
| Isolation transformer | | 0309887(S) | 0309887(S) |
| BMS interface | | 0310013(S) | 0310013(S) |
| Remote display | | 0309999(S) | 0309999(S) |

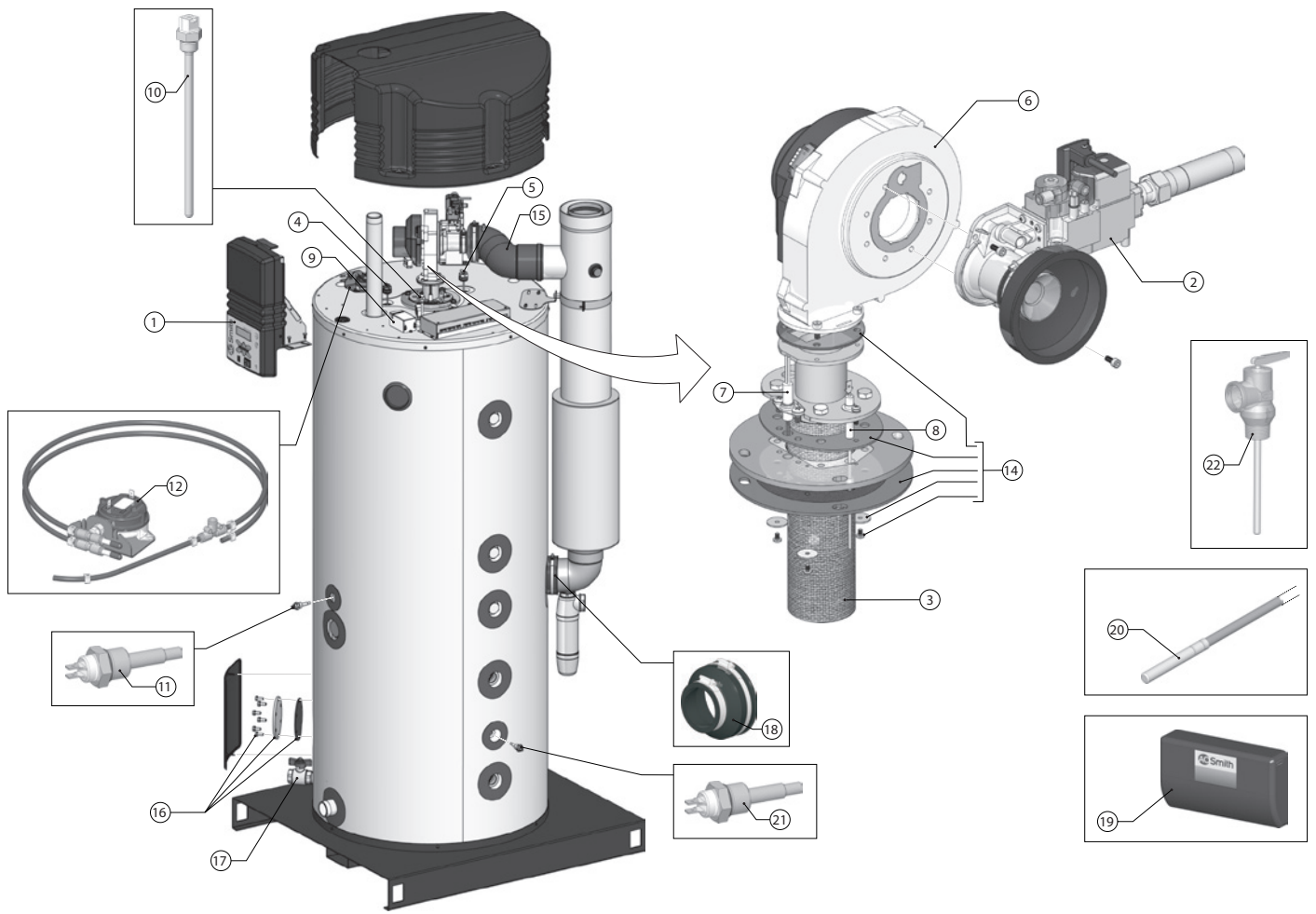
Parts that are marked yellow are parts that are used for maintenance.

Please check the serial number to determine the production date:

172406210302002

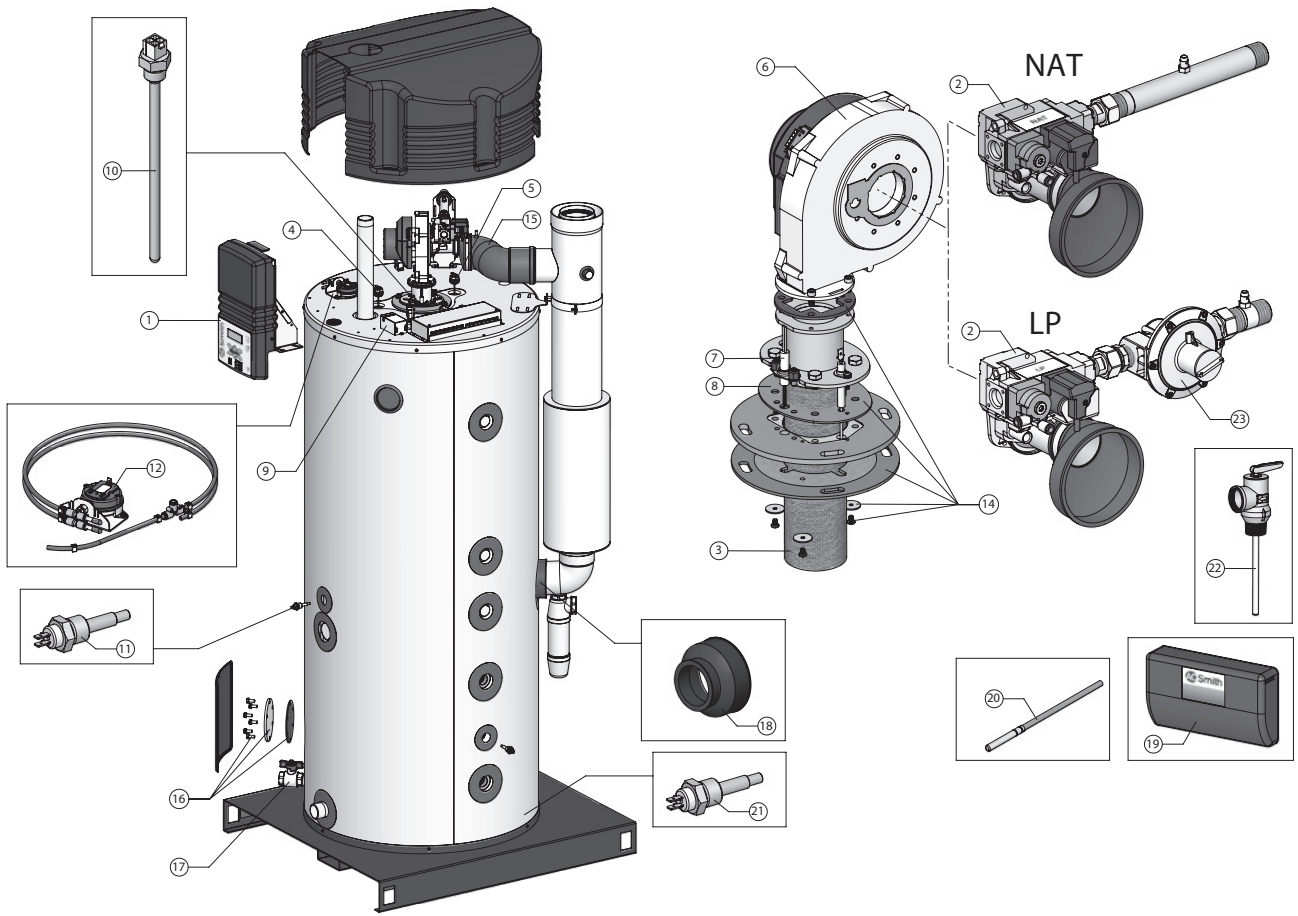
year week

Exploded view SGE from 22-10-'09 until 3-2-'13



EVD-0056 R0

Exploded view SGE after 4-2-'13



EVD-0056 R1